

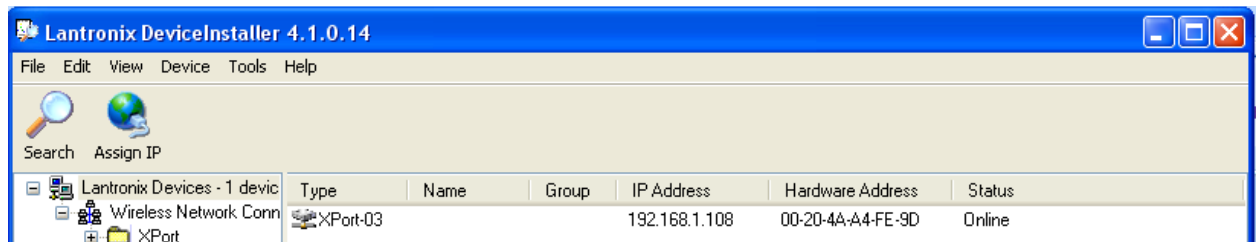
Setting Up Lantronix Device Server Card



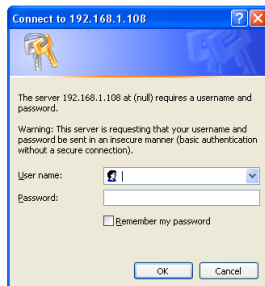
Last Updated September 25, 2009

Progressive Scale and Software Solutions
6 Wine Sap Run
Bethel, CT 06801
Direct: 203-792-2854
Fax: 203-748-2456
Email: info@scale.net

- 1) Setting up Lantronix card on PC
 - a) If you do not know the IP address of your card then run the lantronix Device Installer Software software
 - i) The device installer software can be found at the lantronix site or follow [this link](#)
 - ii) Once you install and run the software you should see a screen like this



- iii)
- iv) The ip address is listed. If the IP is in red then you need to assign an ip address by clicking on the assign ip globe and following the steps it provides.
- v) Go to your web browser and type in the ip address then press enter

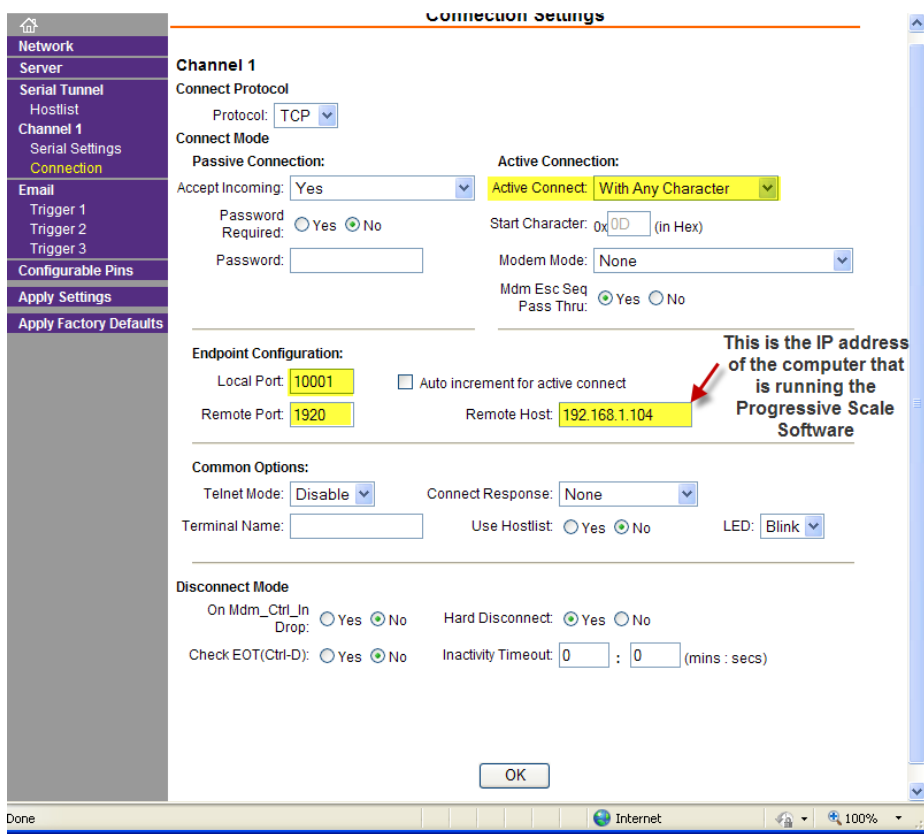


- vi)
- vii) You will get a screen similar to this. By default, both fields are left blank and press OK



viii)

ix) Click on Connection



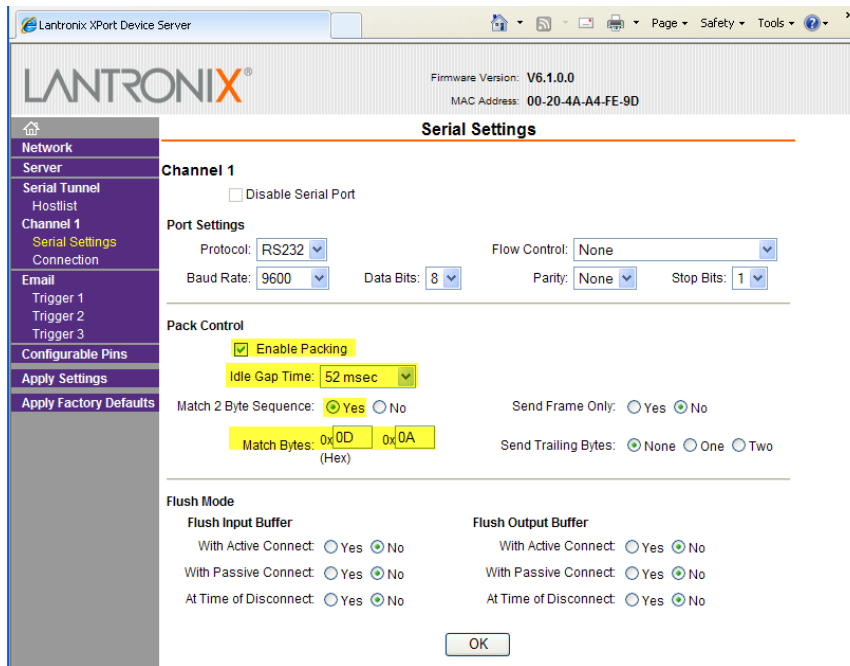
x)

xi) Set up the screen as seen above. The Remote host is the only thing that you will enter differently. This is the ip address of the PC that is running the server/listening software provided by Progressive Scale

xii) Once changed click OK then Apply settings on the left

xiii) The card will restart

xiv) Exit the browser and restart the browser only this time click on serial settings in the purple menu



xv)

xvi) Make your screen match this one then click OK and then apply settings.

xvii) Once the card finishes its reset you should be ready.